



BLUE CORNER CONSERVATION PROGRAM

Welcome to Blue Corner Conservation

Throughout the year we run a series of marine conservation modules. Each module is 6 days long and is an intensive course covering different topics.

Interns can enrol in a single module, or link multiple modules together into a longer program.

Our conservation programs are unique training modules put together by marine biologist Andrew Taylor and run by his team of biologists and dive instructors. The programs are run out of Blue Corner Dive centre located on the beach in Nusa Lembongan island, Bali. A hotspot for marine biodiversity in the coral triangle!



Choose
your
modules

**MARINE ECOLOGY
& CORAL REEFS**

**REEF HEALTH
MONITORING**

**CORAL REEF
RESTORATION**

**MARINE
MEGAFUNA**

PROGRAM COSTS

Single week: USD \$560
Two weeks USD \$1050
Three weeks USD \$1500
Four weeks USD \$1950
Five weeks USD \$2400

All books and survey materials, certification, and use of dive gear are included in the course fees for the conservation modules. We will be doing LOTS of diving - minimum 10+ dives per week.

MARINE ECOLOGY & CORAL REEFS

3 - 8 JUNE 2023
8 - 13 JULY 2023
5 - 10 AUG 2023
2 - 7 SEPT 2023
7 - 12 OCT 2023
4 - 9 NOV 2023
2 - 7 DEC 2023

MODULE DESCRIPTION

The week starts with an in-depth "Introduction to Marine Ecology" lecture which ties in knowledge specific to the areas you will be diving in the Nusa Penida Marine Park. Each day then includes specific task-orientated diving and lectures in topics from coral health, marine invertebrates and tropical reef fish identification.

This module in species identification is required to then follow on with the Reef Health Monitoring Week.



CERTIFICATIONS

Project Aware Coral Reef Conservation

PREREQUISITES

Advanced Diver with good buoyancy

A highly recommended course for any diver with an interest in marine conservation!



COURSE COMPONENTS

Marine Ecology

Marine Fish

Physical Oceanography

Invertebrates

Coral & Coral Reefs

Environmental Impacts



REEF HEALTH MONITORING

10 - 15 JUNE 2023
15 - 20 JULY 2023
12 - 17 AUG 2023
9 - 14 SEPT 2023
14 - 19 OCT 2023
11 - 16 NOV 2023
9 - 14 DEC 2023

MODULE DESCRIPTION

In this week-long program we will learn about several survey techniques used to monitor coral reef health.

You will also learn to use standard Reef Check scientific survey techniques to monitor coral, fish and invertebrate species on a reef. Also, the Coral Watch Coral Health Chart to assess corals for bleaching.

We also practice several standardized survey techniques used by the Nusa Penida Marine Park's long term monitoring project.

CERTIFICATIONS

Reef Check EcoDiver

COURSE COMPONENTS

Survey Methods

Coral Watch

Reef Check

Fish Surveys

Substrate Surveys

Marine Monitoring

PREREQUISITES

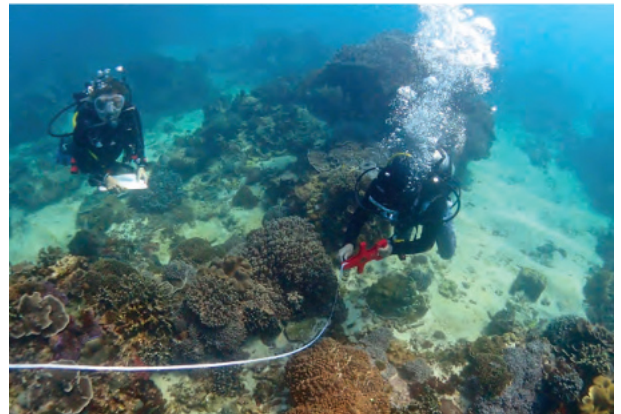
Advanced Diver with good buoyancy

RECOMMENDED COURSE PAIRING

MARINE ECOLOGY
& CORAL REEFS



REEF HEALTH
MONITORING



CORAL REEF RESTORATION

22 - 27 JULY 2023
19 - 24 AUG 2023
16 - 21 SEPT 2023
21 - 26 OCT 2023
18 - 23 NOV 2023
16 - 21 DEC 2023

MODULE DESCRIPTION

This program is conducted as a workshop in which you take part in Blue Corner Marine Research's ongoing coral restoration project.

During this week you will learn about the science of restoration ecology and how it applies to marine environments. You will also learn several techniques in coral propagation, monitor nursery corals and transplant corals onto modular reef structures.

Taught by our in-house marine biologist and certified Ecological Restoration Practitioner.

CERTIFICATIONS

PADI Coral Restoration

PREREQUISITES

Advanced Diver with good buoyancy

COURSE COMPONENTS

Restoration Ecology

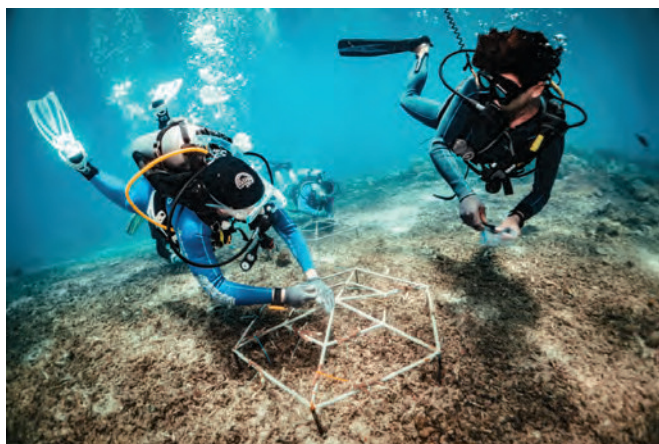
Physical Restoration

Biological Restoration

Coral Transplantation

Coral Nurseries

Penida Restoration Case Study



*Check out our Restoration
Project Description & Updates
www.bluecornerconservation.org*



Interested in coral restoration but don't have time for a full week commitment? We also run 1-day and 2-day coral restoration experiences.



www.BlueCornerConservation.org
Insta/Facebook: @bluecornerconservation
email: andrew@bluecornerdive.com

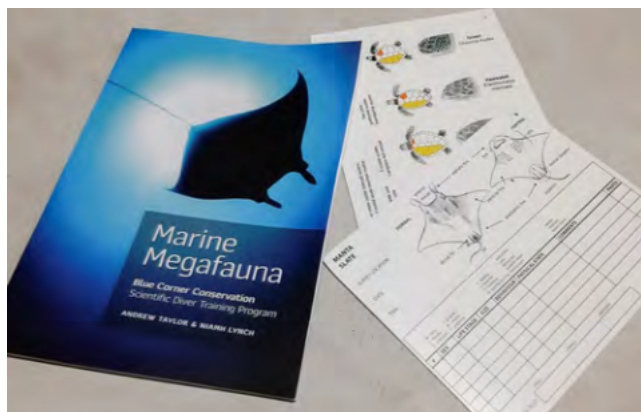


MARINE MEGAFAUNA

24 -29 JUNE 2023
29 JULY - 3 AUG 2023
26 - 31 AUG 2023
23 - 28 SEPT 2023
28 OCT - 2 NOV 2023
25 - 30 NOV 2023

MODULE DESCRIPTION

This week is all about mega-fauna! During this week you will learn about the biology of elasmobranchs (Sharks & Rays) and turtles as well as get up close and personal studying our local manta ray population. Collecting identification photos of the mantas as well as learning about other species sharks & rays in the Nusa Penida Marine Park.



CERTIFICATIONS

PADI/MMF Manta Conservation

PREREQUISITES

Advanced Diver with good buoyancy



COURSE COMPONENTS

MegaFauna of Penida

Manta Rays

Sharks

Sunfish / Mola

Turtles

NUSA PENIDA MEGAFAUNA SEASONS:

	Manta Rays	Sunfish (Mola)	Turtles	Reef Sharks	Pelagic Shaks
JAN					
FEB					
MAR					
APR					
MAY					
JUN					
JUL					
AUG					
SEP					
OCT					
NOV					
DEC					

CMAS SCIENTIFIC DIVER (4 weeks)

PROGRAM DESCRIPTION

The Scientific Diver Program is a 4 week intensive training program.

The program is designed to meet all the competency standards of the *European Scientific Diver* qualification, as well as the standards for Scientific Diving set by the *American Association of Underwater Sciences*. The course is aimed towards anyone interested in working in the environmental consulting industry or for conservation NGO's and looking to get certified in this internationally recognized certification.

During the first week students learn safety standards for working underwater. Topics include advanced dive planning, dive accident management, risk assessment and use of specialized dive equipment. This week has a theory component emphasizing physics, physiology and decompression theory.

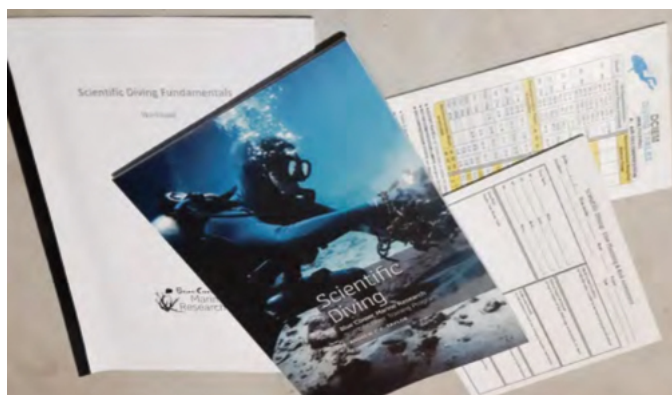
After completing the first "Scientific Diving Fundamentals" module students then have a week learning about marine ecology and a week monitoring the reefs.

Week 1: **SCIENTIFIC DIVING FUNDAMENTALS**

Week 2: **MARINE ECOLOGY & CORAL REEFS**

Week 3: **REEF HEALTH MONITORING**

Week 4: **CORAL RESTORATION**



CERTIFICATION

CMAS Scientific Diver



CMAS Scientific Diver certification meets the standards of the European Scientific Diver Qualification

Additional Certifications included:

Reef Check EcoDiver
PADI Research Diver

PREREQUISITES

Rescue Diver with current First Aid
20+ logged dives

PROGRAM COSTS

4 week program = USD \$1950

Includes:

- SD Training Pack (Textbooks - "Scientific Diving"; "Marine Ecology"; "Reef Health Monitoring"; "Coral Restoration" Workbooks; Underwater slates)
- at least 40 dives
- use of dive equipment

CORAL REEF CONSERVATION TRAINING PROGRAM

8 - 27 JULY 2023
5 - 24 AUG 2023
2 - 21 SEPT 2023
7 - 26 OCT 2023
4 - 23 NOV 2023
2 - 21 DEC 2023

CORAL REEF
ECOLOGY



REEF HEALTH
MONITORING



CORAL
RESTORATION

(1) CORAL REEF ECOLOGY WEEK

The week starts with an in-depth "Introduction to Marine Ecology" lecture which ties in knowledge specific to the areas you will be diving in the Nusa Penida Marine Park. Each day then includes specific task-orientated diving and lectures in topics from coral health, marine invertebrates and tropical reef fish identification.

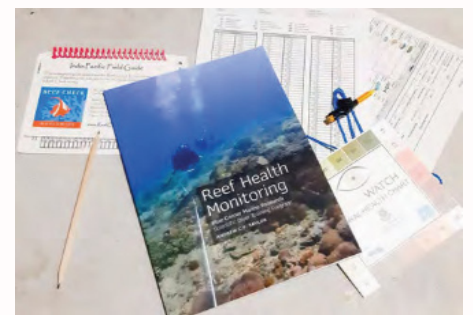
During this course module you will learn to identify coral species and learn about drivers of coral reef health. This background biology information provides a solid foundation for then working on coral restoration.



(2) REEF HEALTH SURVEY WEEK

In this week-long program we will learn about several survey techniques used to monitor coral reef health - including standard Reef Check surveys, and learn ways to monitoring for coral health and bleaching.

During this module you will conduct reef health monitoring surveys at our coral restoration site as well as comparison surveys at neighbouring reefs.



(3) CORAL RESTORE WEEK

The third module of this program involves our week-long coral restoration training course. This is our full program which trains you in each of the aspects of planning and running a coral restoration project.

This full 3 week program is suitable for members of the marine conservation community interested in developing professional-level knowledge in coral reef restoration ecology.



PROGRAM COSTS:

USD \$1500
(IDR 21.500.000)

Contact us for scheduling details

This full 3 week coral reef conservation training program is run several times per year and can be combined with our other training programs such as Scientific Diver, Divemaster, and Instructor

SCIENTIFIC DIVEMASTER PROGRAM

REEF CONSERVATION



PADI Divemaster

Coral Reef Conservation Training Program:

Internship working as part of our coral restoration team and hands-on conservation experience.



PADI Divemaster:

Training to become a dive guide, plan and organize dive programs, gain confidence underwater and take a leadership role



Contact us for a custom schedule!
Divemaster Program can be completed before OR after Scientific Diver modules

OPTION 1:

Scientific Divemaster

CONSERVATION
INTERNSHIP
(3 weeks)



DIVEMASTER
ADD-ON
(4 weeks)

\$2425
(7 weeks)

Program price is based on the price of 3 week Scientific Diver (USD \$1500) plus the 4 weeks of the PADI Divemaster course for a discounted price of USD \$925 (regular price of Divemaster internship at Blue Corner Dive price is USD \$1000). For a total 7 week course price of \$2425

OPTION 2:

CMAS Scientific Divemaster

CMAS
SCIENTIFIC DIVER
(4 weeks)



DIVEMASTER
ADD-ON
(4 weeks)

\$2875
(8 weeks)

Program price is based on the price of 4 week CMAS scientific diver (USD \$1950) plus the 4 weeks of the PADI Divemaster course for a discounted price of USD \$925. For a total 8 week course price of \$2875

EXTRA COSTS

Additional fees for Divemaster course are the PADI Crewpack (USD \$305 can be purchased from us or elsewhere) + PADI membership and DM application (AUD \$220/ USD \$150 payable directly to PADI).

PADI Crewpack \$305
PADI Application \$150

Students are responsible for their own meals and accommodation throughout the course as well as transport to and from the island.

Want
MORE?

PADI Instructor Development Course



LOGISTICS

ACCOMODATION

Blue Corner Dive has a dormitory for students (\$15/bed/night for AC dorm or \$10 for fan bed). This can be a nice social option for either the first few nights while you get to know the island, or even for the entire time of your course. If you choose to stay in our on-site fan dorm during the course we offer students weekly rates of \$60/week.

Depending on the time of year you can find a basic room for a long term stay around \$80-150 (IDR 1.000.000 - 2.000.000) /week - depending on comfort level. Living Room bungalows is a short walk from Blue Corner and offers garden rooms with a shared kitchen & pool for \$200/week. There are also many higher budget options available here on the island all the way up to private villas.

GETTING TO LEMBONGAN

Nusa Lembongan island is easy to get to from mainland Bali. Most speed boat ferries depart from Sanur Beach in Bali and arrive into Lembongan at either Jungutbatu Harbor or Mushroom Bay.

If you purchase your tickets in advance (either by emailing one of the boat companies or we can help you make a booking) then usually the ticket will include either pick up from the airport/ or hotel in Bali and drop off to the diveshop here in Lembongan.

Boat companies we recommend are: Rocky Fast Cruise, Glory Express, D'Camel, Arthamas.



VISAS

During the last few years procedures for entry into Indonesia have changed. We recommend contacting your local Indonesian embassy for the latest up-to-date details before booking your trip.

A 30-day Visa on Arrival (VOA) is available upon entry into Bali. However, for students enrolling in extended programs we recommend applying for a visa in advance from a reputable visa agent. The types of visas for entry into Indonesia have recently changed with some visas allowing up to 6 months stay in Indonesia.

Please apply through an agent online in advance of traveling to Indonesia.

HEALTH

Divers enrolled in courses must ensure that they are medically fit to scuba dive. If you have any pre-existing medical conditions which interfere with diving or your health status has changed since you were previously cleared to dive, then please visit a doctor to ensure that you are fit to dive.

Students enrolled in the Scientific Diver or Divemaster programs require signed doctors clearance for diving.

INSURANCE

We strongly recommend all students to carry sufficient travel insurance to cover both diving or other medical emergencies.

Worldwide dive insurance plans for both short and long trips are available through the Divers Alert Network (www.dan.org)

EQUIPMENT

Students enrolled in our Scientific Diver Course require the following items, and we recommend them for all programs:

SMB (Safety Marker Bouy) & Reel
Dive computer
Dive Mask

For enhanced enjoyment of the course, students may want to bring their own:

Underwater camera
Wetsuit (5mm during June-Oct / 3mm Nov-May)
Fins (currents are strong here so have good ones!)
BCD & Regulator

Basic dive gear is available for use during the course from Blue Corner Dive.