

DIVING INTERNSHIP PROGRAMS

Throughout the year we run a series of marine conservation modules for certified divers. Each module is 6 days long and is an intensive course covering different topics.

Interns can enrol in a single module, or link multiple modules together into a longer program.

Our conservation programs are unique training modules put together by marine biologist Andrew Taylor and run by his team of biologists and dive instructors. The programs are run out of Blue Corner Dive centre located on the beach in Nusa Lembongan island, Bali. A hotspot for marine biodiversity in the coral triangle!



Choose
your
modules

**MARINE ECOLOGY
& CORAL REEFS**

**REEF HEALTH
MONITORING**

**CORAL REEF
RESTORATION**

**MARINE
MEGAFUNA**

PROGRAM COSTS

Single week: IDR 8.900.000

Two weeks: IDR 17.000.000

Three weeks: IDR 25.000.000

Four weeks: IDR 33.000.000

INCLUDES:

All diving, books, survey materials and certifications are included in course fees.

ADDITIONAL FEES:

Dive Equipment rental from Blue Corner:
- full set dive gear IDR 750.000 /week

Accommodation is available at Blue Corner
- Dormitory beds IDR 100.000 /night or
- private rooms IDR 650.000 /night

MARINE ECOLOGY & CORAL REEFS

Starts **FIRST** Saturday of each month:

6 - 11 Jan 2024
3 - 8 Feb 2024
2 - 7 Mar 2024
6 - 11 Apr 2024
4 - 9 May 2024
1 - 6 June 2024

6 - 11 July 2024
3 - 8 Aug 2024
7 - 12 Sept 2024
5 - 10 Oct 2024
2 - 7 Nov 2024
7 - 12 Dec 2024

MODULE DESCRIPTION

The week is an in-depth Marine Ecology training program which focuses species identification and ecosystem dynamics with diving in the Nusa Penida Marine Park.

Each day includes specific task-orientated diving and lectures in topics from coral health, marine invertebrates and tropical reef fish identification. Divers take part in underwater clean-ups, manta/turtle data collection, and coral restoration.

This is a great stand-alone module for students looking for a short week-long internship, or a great building block for longer internships.

A highly recommended course for any diver with an interest in marine conservation!



CERTIFICATIONS

Project Aware Coral Reef Conservation

PREREQUISITES

Advanced Diver with good buoyancy

COURSE COMPONENTS

Marine Ecology

Marine Fish

Physical Oceanography

Invertebrates

Coral & Coral Reefs

Environmental Impacts



CORAL REEF CONSERVATION TRAINING PROGRAM

sign up for the following 3 modules

CORAL REEF
ECOLOGY

+

REEF HEALTH
MONITORING

+

CORAL
RESTORATION

This 3-week internship program is designed for coral restoration enthusiasts! Be part of our coral restoration team and train as a coral restoration practitioner - develop in depth knowledge in coral ID, reef restoration methods and monitoring.



REEF HEALTH MONITORING

Starts **SECOND Saturday** of each month:

13 - 18 Jan 2024
FEB - Inquire
8 - 14 Mar 2024
13 - 18 Apr 2024
11 - 16 May 2024
8 - 13 June 2024

13 - 18 July 2024
10 - 15 Aug 2024
14 - 19 Sept 2024
12 - 17 Oct 2024
9 - 14 Nov 2024
14 - 19 Dec 2024

MODULE DESCRIPTION

In this week-long program we will learn about several survey techniques used to monitor coral reef health.

You will also learn to use standard Reef Check scientific survey techniques to monitor coral, fish and invertebrate species on a reef. Also, the Coral Watch Coral Health Chart to assess corals for bleaching.

We also practice several standardized survey techniques used by the Nusa Penida Marine Park's long term monitoring project.

CERTIFICATIONS

Reef Check EcoDiver



COURSE COMPONENTS

Survey Methods

Coral Watch

Reef Check

Fish Surveys

Substrate Surveys

Marine Monitoring

PREREQUISITES

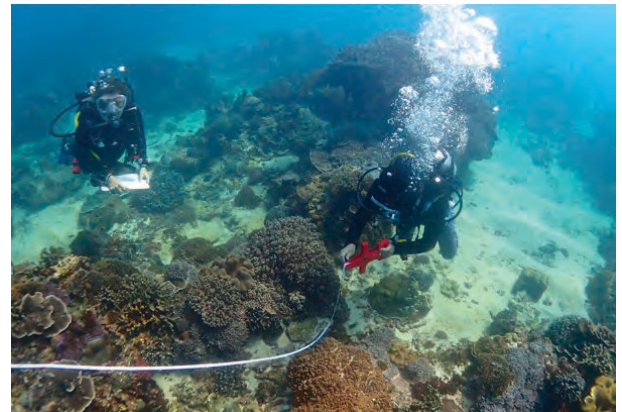
Advanced Diver with good buoyancy

RECOMMENDED COURSE PAIRING

MARINE ECOLOGY
& CORAL REEFS



REEF HEALTH
MONITORING



For students interested in only Reef Check certification please contact us for scheduling

bluecornerconservation@gmail.com



CORAL REEF RESTORATION

Starts **THIRD Saturday** of each month:

20 - 25 Jan 2024
17 - 22 Feb 2024
16 - 21 Mar 2024
20 - 25 Apr 2024
18 - 23 May 2024
15 - 21 June 2024

20 - 25 July 2024
17 - 22 Aug 2024
21 - 26 Sept 2024
19 - 24 Oct 2024
16 - 21 Nov 2024
21 - 26 Dec 2024

MODULE DESCRIPTION

This program is conducted as a workshop in which you take part in Blue Corner Marine Research's ongoing coral restoration work - the Nusa islands' largest and longest running reef restoration project.

Our 6-day coral restoration workshop can be taken as a stand-alone course, or as part of a longer Coral Reef Conservation Internship.

During this week you will learn about the science of restoration ecology and how it applies to marine environments. You will also learn several techniques in coral propagation, structural and biological aspects of reef restoration, and monitor nursery corals.

Taught by our in-house marine biologists the program was developed in-line with principles of the Society for Ecological Restoration.

CERTIFICATIONS

PADI Coral Restoration Diver

COURSE COMPONENTS

Restoration Ecology

Structural Restoration

Biological Restoration

Coral Transplantation

Coral Nurseries

Penida Restoration Case Study



Interested in Coral Restoration?
Take our online training course.

Start the eLearning before you arrive



Interested in coral restoration but don't have time for a full week commitment? We also run 1-day and 2-day coral restoration experiences.



**Check out our Restoration
Project Description & Updates**
www.bluecornerconservation.org



MARINE MEGAFAUNA

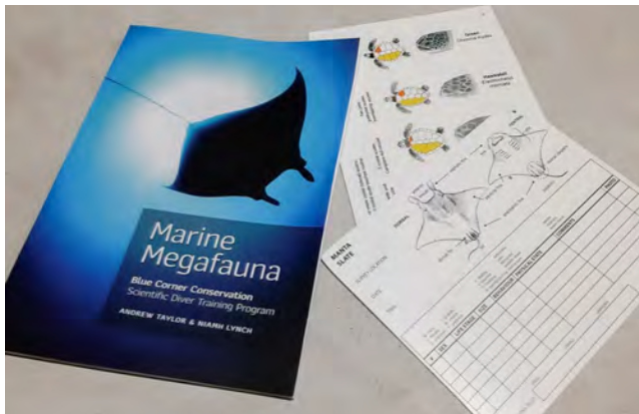
Starts **FOURTH Saturday of each month:**

27 Jan - 1 Feb 2024
 24 - 29 Feb 2024
 23 - 28 Mar 2024
 27 Apr - 2 May 2024
 25 - 30 May 2024
 22 - 27 June 2024

27 July - 1 Aug 2024
 24 - 29 Aug 2024
 28 Sept - 3 Oct 2024
 26 - 31 Oct 2024
 23 - 28 Nov 2024

MODULE DESCRIPTION

This week is all about mega-fauna! During this week you will learn about the biology of elasmobranchs (Sharks & Rays) and turtles as well as get up close and personal studying our local manta ray population. Collecting identification photos of the mantas as well as learning about other species sharks & rays in the Nusa Penida Marine Park.



CERTIFICATIONS

PADI/MMF Manta Conservation

PREREQUISITES

Advanced Diver with good bouyancy



COURSE COMPONENTS

MegaFauna of Penida

Manta Rays

Sunfish / Mola

Sharks

Turtles

NUSA PENIDA MEGAFUNA SEASONS:

	Manta Rays	Sunfish (Mola)	Turtles	Reef Sharks	Pelagic Shaks
JAN					
FEB					
MAR					
APR					
MAY					
JUN					
JUL					
AUG					
SEP					
OCT					
NOV					
DEC					

Interested in diving with the marine megafauna of Nusa Penida marine park, but don't have time for a full week program?

Join our marine biologists for a 1-day or 2-day Manta Conservation course.

Sign up for fun dives to Manta Point!

RESEARCH STUDENTS

For students wishing to complete an academic research project we can accommodate these requests on a case-by-case basis. Research projects will require coordination between yourself, our field biologists and your academic institution. Blue Corner has experience hosting research projects for students from universities all over the world.

We have a selection of on-going research topics which we encourage researchers to join, or alternatively chat with us about proposing a new topic.

To participate as a researcher with Blue Corner we require that students first enroll in our full 4-week conservation program. After completing this foundation then researchers will conduct their project through a minimum of 2 and maximum of 6 add-on Research Weeks. Note that during high season boat space is limited so discuss with us a suitable time-frame for collecting the data needed for your research project.

During research weeks participants will be partnered with a local university research student for data collection. Research students will also assist our biologists during conservation internship programs.



Our marine biologists will provide project guidance and logistical support for the data collection dives. Research students are encouraged to participate in public outreach by conducting a seminar presentation about their research project in Nusa Lembongan as well as publishing findings in a scientific journal co-authored by the researcher, our team and supervisor.

4-week
Conservation
Internship



Research
Project

PROGRAM COSTS:

4 week Conservation Program
IDR 33.000.000

Research Weeks (min 2 - max 6):
IDR 6.500.000 /week

Research students are required to have some of their own personal dive equipment for safety, such as dive computer, SMB, personal mask. Other dive equipment can be rented through Blue Corner Dive.



Potential research students are encouraged to contact us early to begin coordinating logistics and supervising requirements.

email: andrew@bluecornerdive.com

SCIENTIFIC DIVEMASTER PROGRAM

REEF CONSERVATION



PADI Divemaster

Coral Reef Conservation Training Program:

Internship working as part of our coral restoration team and hands-on conservation experience.



PADI Divemaster:

Training to become a dive guide, plan and organize dive programs, gain confidence underwater and take a leadership role



Contact us for a custom schedule!
Divemaster Program can be completed before OR after Conservation modules

*Scientific
Divemaster*

PADI
Divemaster
(4 weeks)



Conservation
Modules
(1 - 4 weeks)

Combine the popular PADI Divemaster program with marine conservation!

Add on one or more of the conservation modules to your divemaster course for an extended internship program. The 4-week PADI Divemaster course can be started any Saturday throughout the year at Blue Corner Dive on Nusa Lembongan (or at our Nusa Penida diveshop), then join the conservation modules which interest you (Conservation modules are all run at Blue Corner Dive in Nusa Lembongan).

PADI Divemaster Course: IDR 18.800.000

+ Conservation Modules: 1 module - IDR 8.900.000

2 modules - IDR 17.000.000

3 modules - IDR 25.000.000

4 modules - IDR 33.000.000

EXTRA COSTS

PADI Crewpack IDR 4.500.000

PADI Application AUD \$220

Dive Equipment rental from Blue Corner:

- full set dive gear IDR 750.000 /week

Accommodation is available at Blue Corner

- Dormitory beds IDR 100.000 /night or

- private rooms IDR 650.000 /night

Want
MORE?

PADI Instructor Development Course



LOGISTICS

ACCOMODATION

Blue Corner Dive has a dormitory for students (IDR 100.000/bed/night for fan dorm or IDR 150.000 for bed in AC dormitory). This can be a nice social option for either the first few nights while you get to know the island, or even for the entire time of your course. On-site private airconditioned rooms are also available at IDR 650.000 /night.

Depending on the time of year you can find a basic room for a long term stay around IDR 2.000.000 - 3.000.000 /week - depending on comfort level.

GETTING TO LEMBONGAN

The courses are run at Blue Corner Dive in Nusa Lembongan island, Bali. The diveshop is located on the main Jungutbatu beach which is walking distance to many accommodation and food options and easy to get around Lembongan island by foot, bicycle or scooter.

Arriving to the island is easy from mainland Bali. Several ferry companies operate the route between Sanur Harbour in Bali to Nusa Lembongan between 7:30am - 5:00pm. Most ferry companies have the option to include pick up in Bali (from airport or hotel) and drop off in Lembongan. For ease of travel we recommend booking online directly with a ferry company in advance of arrival to the Bali ferry terminal. Ferry companies we recommend include: Rocky Fast Boat, Arthamas Express, or D-Star Fast Ferry.

If you are arriving from Nusa Penida, small water-taxis operate during daylight hours between Toya Pakeh Harbour in Penida and the Yellow Bridge in Lembongan.

Arriving from Gili Islands & Lombok can be arranged with either the EkaJaya Fast Boat, Idola Express, or Scoot Fast Cruises.



VISAS

During the last few years procedures for entry into Indonesia have changed. We recommend contacting your local Indonesian embassy for the latest up-to-date details before booking your trip. A 30-day and 60-day eVisa is available online through the Indonesian government immigration website.

However, for students enrolling in extended programs wanting to stay within Indonesia for a period beyond 60-days without a visa-run to Kuala Lumpur or Singapore, then we recommend applying for a visa in advance from a reputable visa agent (such as EVisa Bali: <https://www.evisabali.com/>). If you choose to use an agent please contact the agent in advance of travelling to Indonesia.

HEALTH

Divers enrolled in courses must ensure that they are medically fit to scuba dive. If you have any pre-existing medical conditions which interfere with diving or your health status has changed since you were previously cleared to dive, then please visit a doctor to ensure that you are fit to dive.

Students enrolled in the Scientific Diver or Divemaster programs require signed doctors clearance for diving.

INSURANCE

We strongly recommend all students to carry sufficient travel insurance to cover both diving or other medical emergencies.

Worldwide dive insurance plans for both short and long trips are available through the Divers Alert Network (www.dan.org)

EQUIPMENT

Students enrolled in the Divemaster Course require the following personal items, and we recommend them for all programs:

- SMB (Safety Marker Bouy) & Reel**
- Dive computer**
- Dive Mask**

The course fees do not include dive gear. Basic dive gear is available for rent during the course from Blue Corner Dive. Full set of dive gear rental is IDR 150.000 /day or IDR 650.000 /week.